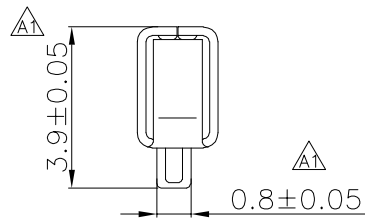
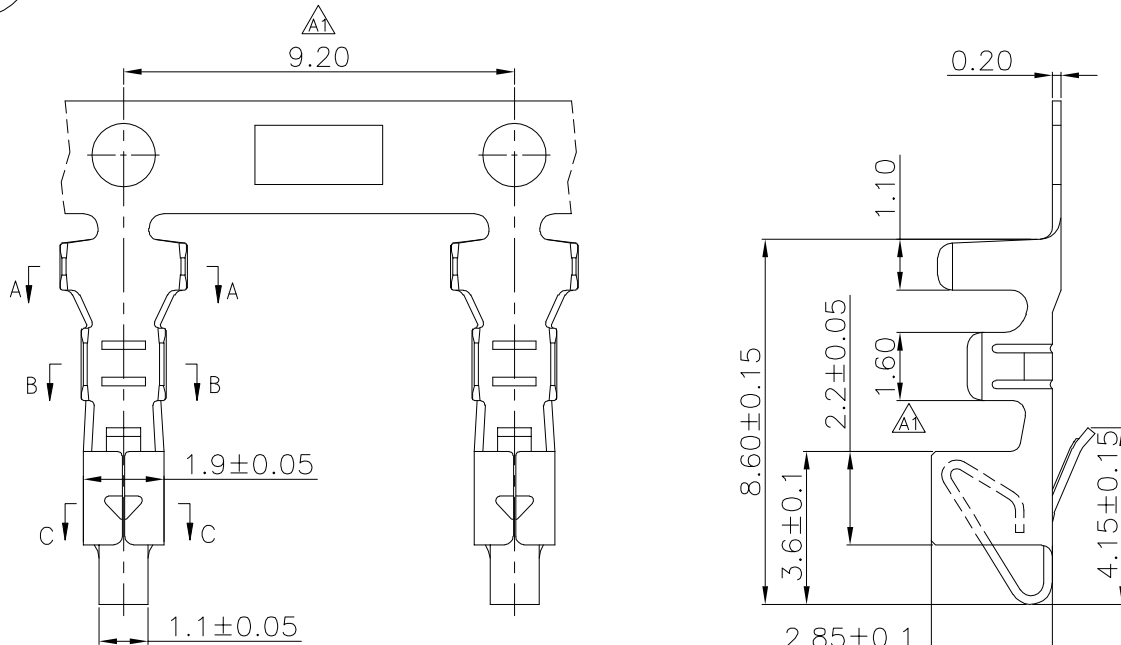
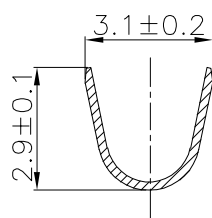


The product using material and processing must conform to the "WI-PZ-001"HSF technical standard control requirements

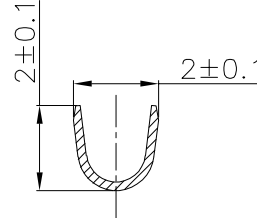
ROHS



SECTION C-C



SECTION A-A



SECTION B-B

NOTE:

- 1.MATERIAL SPECIFICATION:
 - 1-1.CONTACTS: PHOSPHOR BRONZE
- 2.PLATING SPECIFICATION:
 - 2-1.CONTACTS: TIN/GOLD FLASH PLATED OVER ALL.
- 3.MECHANICAL PERFORMANCE:
 - 3-1.RETENTIVITY FORCE: 2.0KGF/pin min
 - 3-2.DURABILITY: 50 CYCLES.
- 4.ELECTRICAL PERFORMANCE:
 - 4-1.CURRENT RATING: 3A
 - RATED VOLTAGE : 250V AC/DC
 - 4-2.CONTACT RESISTANCE: 20 mΩ MAX
 - 4-3.INSULATION RESISTANCE: 500 MΩ Min
 - 4-4.DIELECTRIC WITHSTANDING : 1500V
- 5.ENVIRONMENTAL PERFORMANCE:
 - 5-1.OPERATING TEMPERATURE: -40°C~+105°C.
- 6.P/N:

SERIES NO: C2521 T 1 F X-X
 CONNECTOR: T
 TYPE CODE: X-X
 PLATING:
 1-G/F
 A-ALL AU G/F
 C-BRIGHT TIN
 D-MATTE TIN
 METAL:
 P-PHOSPHOR BRONZE
 B-BRASS
 MALE FEMALE:
 F-FEMALE
 M-MALE

Ordering Information & Specification:

Wire Range	Insulation O.D	Qty/Reel
AWG #22~#28	1.0~1.80mm	5000 pcs

REV.	REVISION RECORD	DATE	GENERAL TOLERANCES		SCALE:	NAME	DATE	PART.NO:	DWG.NO:	 WanLian Technology Co., Ltd	
A0	NEW RELEASE	21.01.13	LINEAR	ANGLES	1:1	JR_WANG	23.03.15	C2521T1FX-X	ENDE05		
A1	尺寸变更	23.03.15	0.0±0.35	X'REF±6°	APPROVED	HAN_GAO	23.03.15	TITLE:			
			UNIT:mm	X'±3°	DESIGNER	LX_HOU	23.03.15	Pitch 2.5mm SM磷铜母端子AWG #22~28			
			SIZE: A4	0.000±0.10	DRAWN					REV: A1	SHEET: 1/1